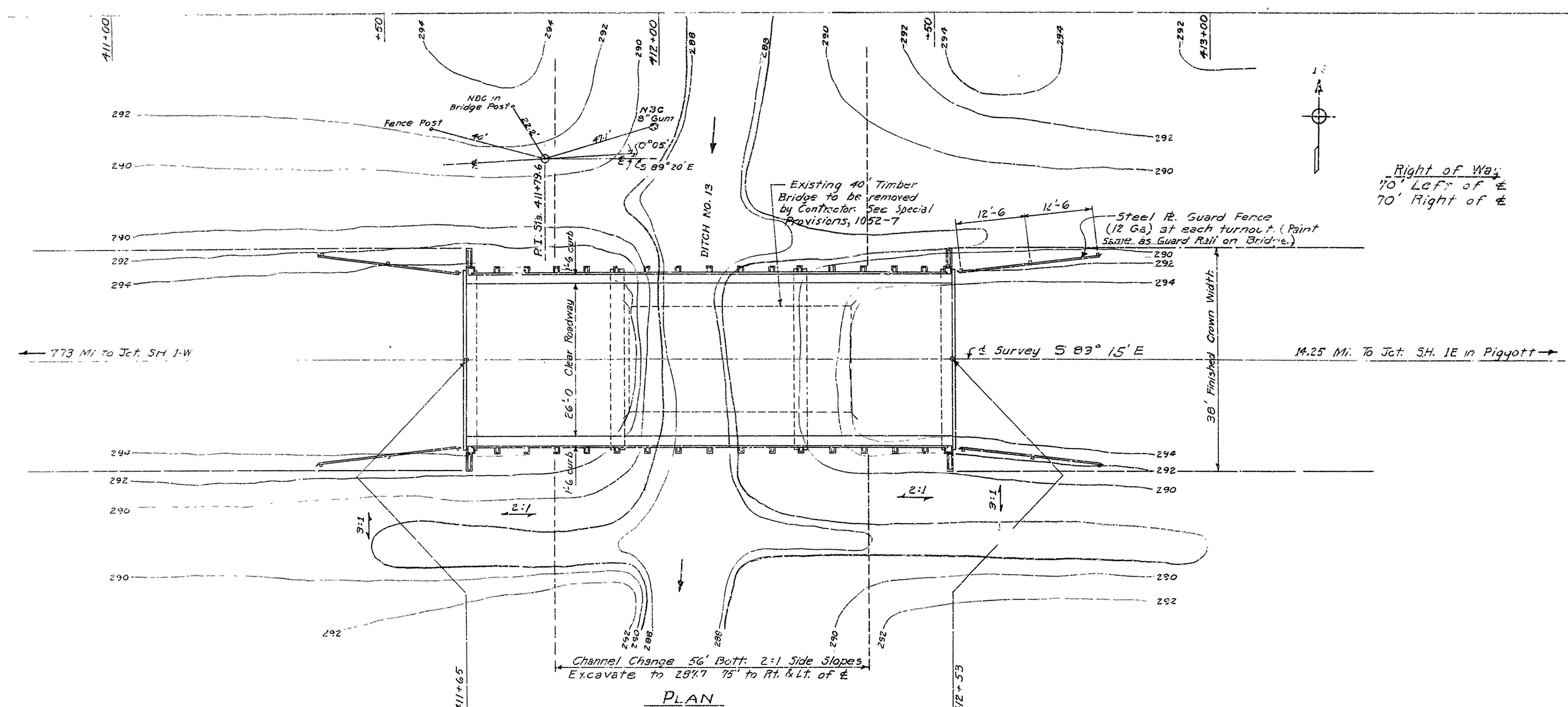
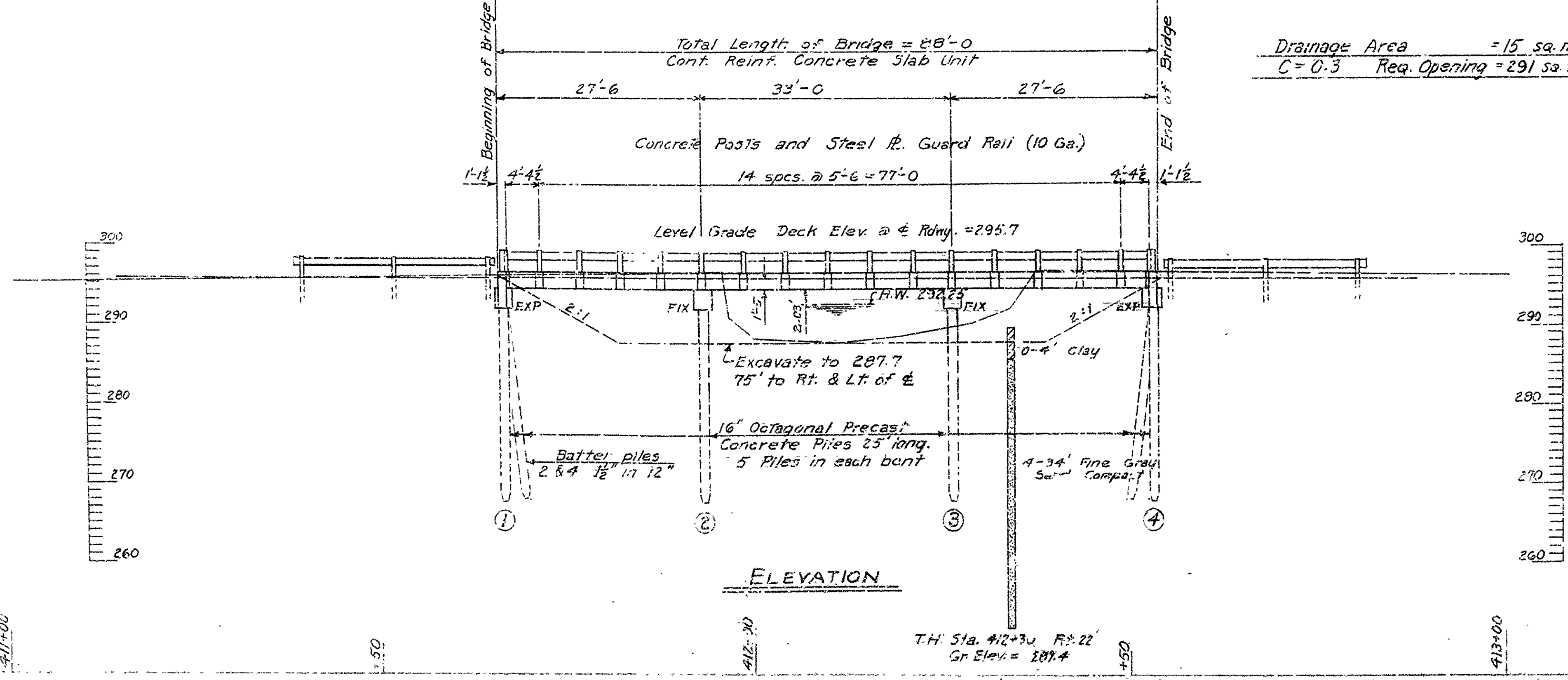


STATE	PROJECT NO.	FIGURE	SHEET NO.	TOTAL SHEETS
ARK.			8	134
STATE JOB NO. 10441				



PLAN



ELEVATION

Drainage Area = 15 sq. mi.
C = 0.3 Req. Opening = 291 sq. ft.

NOTES

B.M. Sta. 412+01 Top of second bolt, West end of the South Guard Rail at Existing Bridge. Elev. = 297.17

Lengths of precast concrete piles shown are for estimating purposes only. Actual lengths are to be determined in the field. Drive one 30' Test Pile in Bent #2
For Details of Bents & Slab see Dngs 5375 & 5376

Loading H20 } A.A.S.H.O Revised 1949
Stresses: Reinforcing Steel 20,000 #/sq.
Class 'S' Concrete (n=10) 1200 #/sq.

Piles to be driven to minimum bearing as follows:
Bents 1 & 4 30 Tons per Pile.
Bents 2 & 3 40 " " "

LAYOUT OF BRIDGE
OVER DRAINAGE DITCH "13
POLLARD-CORNING JUNCTION
CLAY COUNTY
ROUTE 62 SEC. 20

ARKANSAS STATE HIGHWAY COMMISSION
LITTLE ROCK, ARK
Drawn By: W.W.M. Date: 6-12-52 Scale: 1" = 10 ft.
Traced By: Date:
Checked By: G.H.K. Date: 6-20-52
BRIDGE No. 2859 DRAWING No. 8207

REV.	DATE	BY	CHKD.	APP.
1	10-1-40	W. H. B.		
2	10-1-40	W. H. B.		
3	10-1-40	W. H. B.		
4	10-1-40	W. H. B.		
5	10-1-40	W. H. B.		

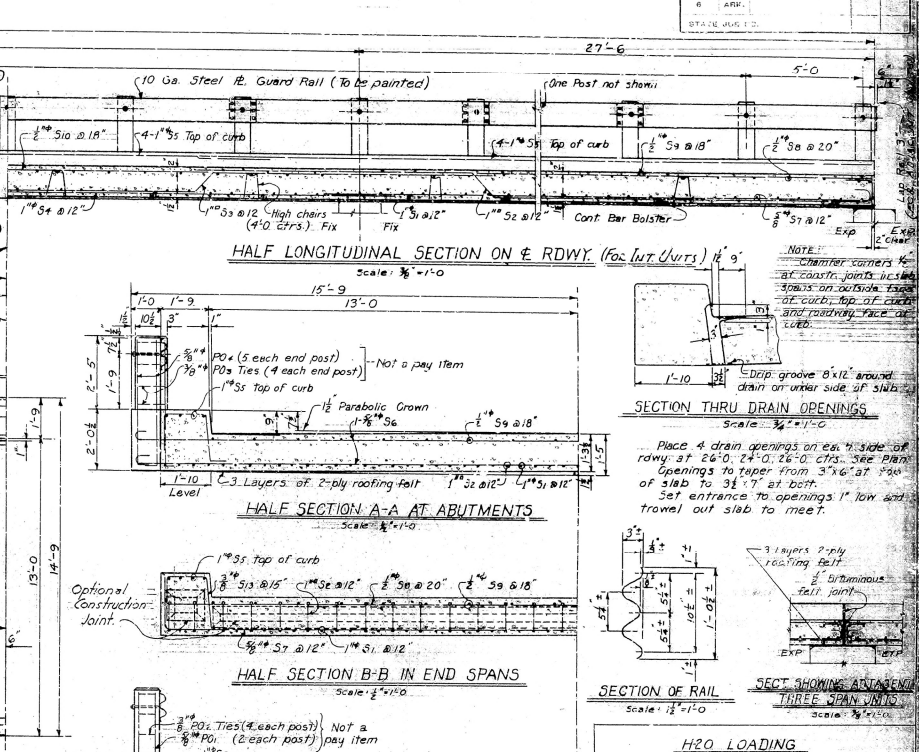
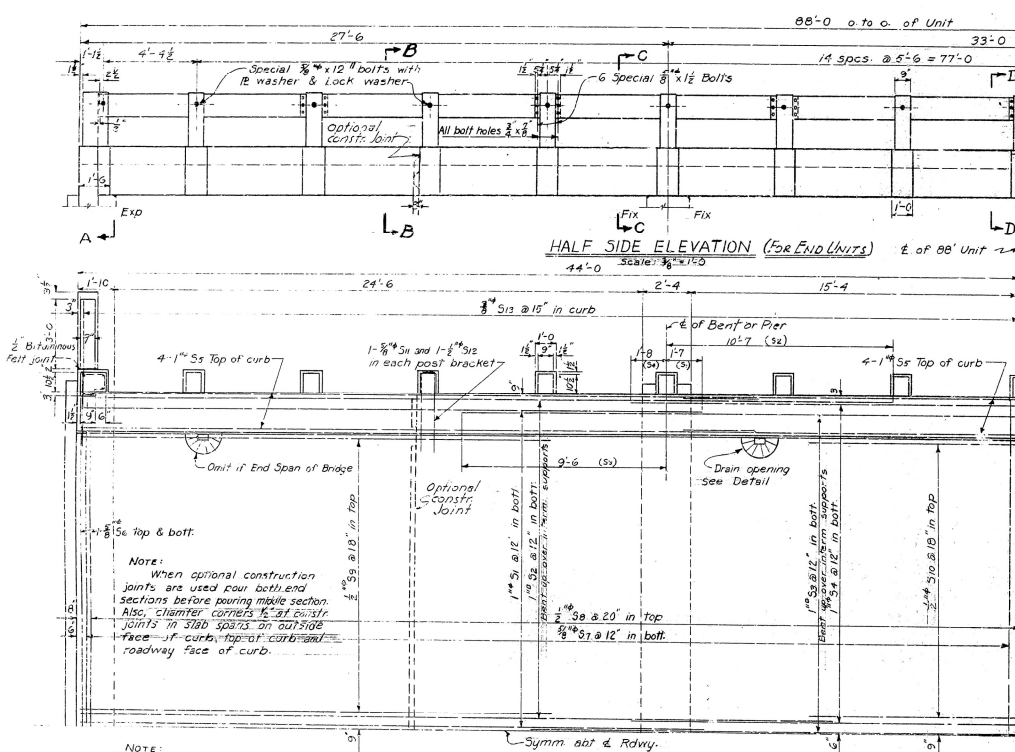


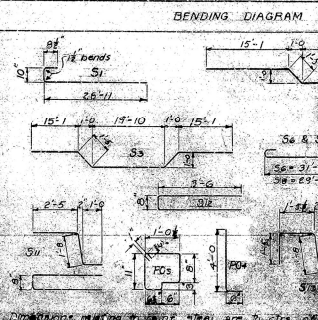
DIAGRAM SHOWING ARRANGEMENT OF MAIN LONGITUDINAL REINFORCING BARS IN ALTERNATE ROWS

GENERAL NOTES

All concrete to be Class 'S'. All exposed corners to be chamfered 3/4" unless otherwise noted. Reinforcing steel to be deformed bars of intermediate grade. Shop lists and bending diagrams must be submitted by the contractor and approved before fabrication is begun. All reinforcing steel shall be accurately located in the forms and firmly held in place by means of steel wire supports, sufficient in number and size to prevent displacement during the course of construction and to keep the steel a proper distance from the forms. The wire supports will not be paid for directly but will be considered subsidiary to the item of reinforcing steel. Shop lists and bending diagrams must be submitted for approval. Payment for roofing and bituminous felt shall be included in the price bid for Class 'S' concrete. The steel plate guard rail shall be of the type shown or an equivalent rigid type as approved by the Engineer. The steel plate guard rail, including all concrete posts, shall be paid for at the unit price bid per linear foot for steel plate guard rail. SPECIFICATIONS: Arkansas State Highway Commission Standard Specifications for Road and Bridge Construction, adopted March 1, 1940. * Or see Special Provision, 803.5 When included with the job.

LIST OF BARS PER 88' UNIT

MARK	SIZE	NO. REQD.	LENGTH
51	1"	58	30'-4"
52	1"	60	29'-4"
53	1"	29	52'-10"
54	1"	30	56'-4"
55	1"	24	31'-6"
56	1"	21	32'-2"
57	1"	88	32'-0"
58	1"	53	30'-2"
59	1"	36	18'-6"
510	1"	19	18'-0"
511	1"	34	10'-10"
512	1"	34	17'-8"
513	1"	32	53'-1"
514	1"	20	14'-8"
515	1"	21	18'-4"
516	1"	16	3'-10"
517	1"	20	0'-4"



H2O LOADING
Load Distribution to Slab:
Dead Load: 209 #/ft.
Live Load: C-174 wheels/ft. of width.
or Lane Loads:
Uniform Load: 55.7 #/ft.
Concentrated Load: 1507 #/ft. of width.
Impact: 30 %
Unit Stresses:
Class 'S' conc. (max): 1200 #/sq. in.
Reinforcing Steel: 20,000 #/sq. in.

DETAILS OF STANDARD 88'-0" THREE SPAN CONTINUOUS R.C. SLAB
SPAN LENGTHS 27'-6" - 33'-0" - 27'-6"
26'-0" CLEAR RDWY. 2 CURBS @ 1'-6"

ARKANSAS STATE HIGHWAY COMMISSION
LITTLE ROCK, ARK.
Scale: 1/8" = 1'-0"

DRAWING NO. 10172